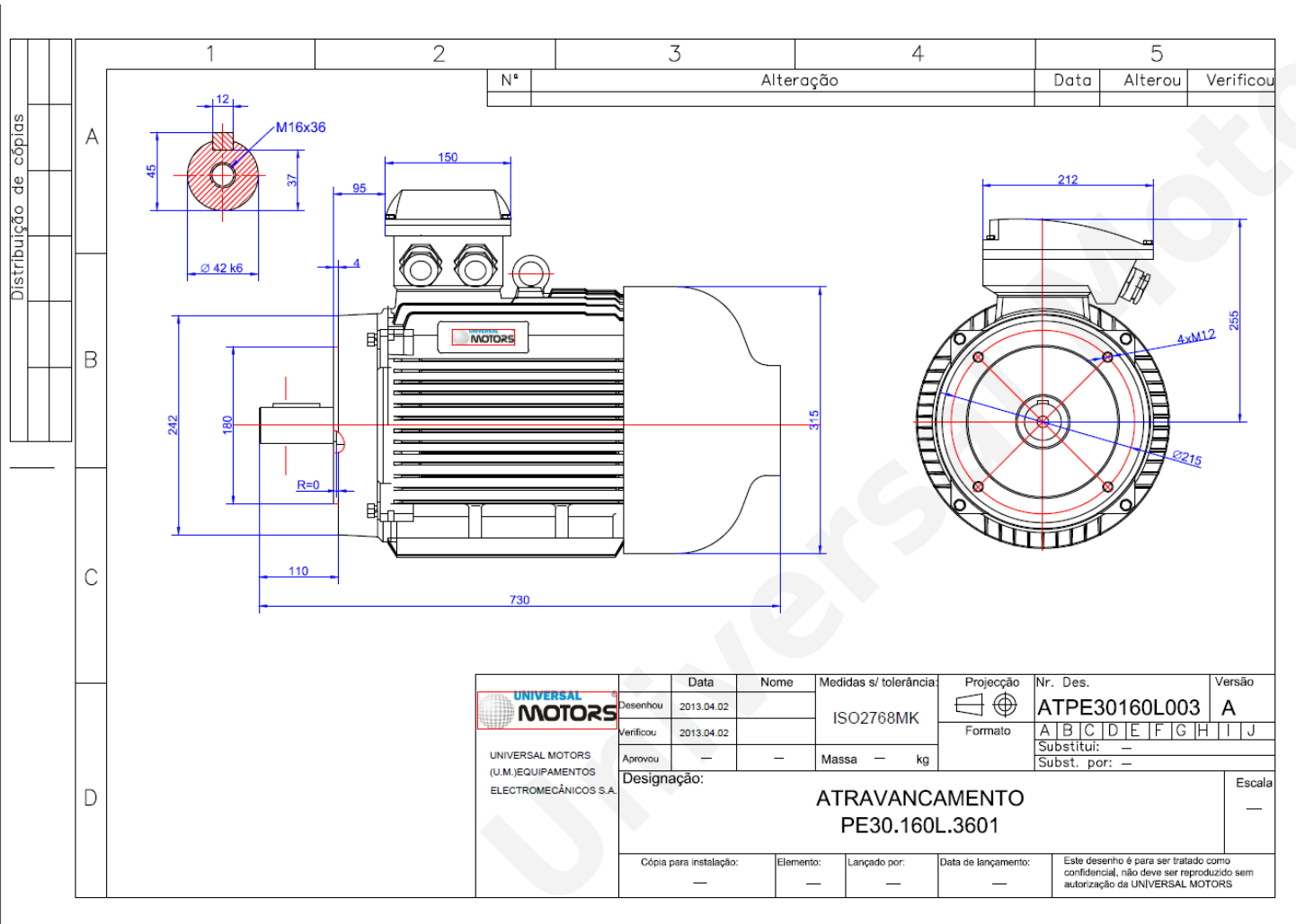


# TECHNICAL DATA

Three Phase Electric Motors - Cast Iron Frame  
 PE30 160 L 2 IE3  
 18.5 kW / 25 Cv  
 2950 RPM



|                             |                         |
|-----------------------------|-------------------------|
| Motor type:                 | <b>PE30 160 L 2 IE3</b> |
| Output:                     | <b>18.5 kW / 25 Cv</b>  |
| Speed (min <sup>-1</sup> ): | <b>2950 RPM</b>         |
| Frequency:                  | <b>50 Hz</b>            |
| Voltage:                    | <b>400 V</b>            |
| Current:                    | <b>32.5 A</b>           |
| Power factor (Cos Ø):       | <b>0.89</b>             |
| Poles:                      | <b>2</b>                |
| Insulation class:           | <b>F</b>                |
| Temperature rise Class:     | <b>B</b>                |
| Efficiency 50%:             | <b>91.6 %</b>           |
| Efficiency 75%:             | <b>92.8 %</b>           |
| Efficiency 100%:            | <b>92.6 %</b>           |
| Torque:                     | <b>60 N.m</b>           |
| Tstarting/Tnominal:         | <b>2.0</b>              |
| Istarting/Inominal:         | <b>8.2</b>              |
| Tmaximum/Tnominal:          | <b>2.3</b>              |
| Noise:                      | <b>81 Db(A)</b>         |
| Weight:                     | <b>134 Kg</b>           |
| Bearing DE:                 | <b>6309 C3</b>          |
| Bearing NDE:                | <b>6309 C3</b>          |

**Regime - S1**

**Altitude - 1000m**

**Environment Temperature - 40°C**

**CONTACTS:**

UNIVERSAL MOTORS    Tel: +351 252 299 080  
 Rua de São Brás,745    Fax: +351 252 299 089  
 4480-782 VILA DO CONDE    Mail: [geral@universalmotors.pt](mailto:geral@universalmotors.pt)

\* References applied only in the UK